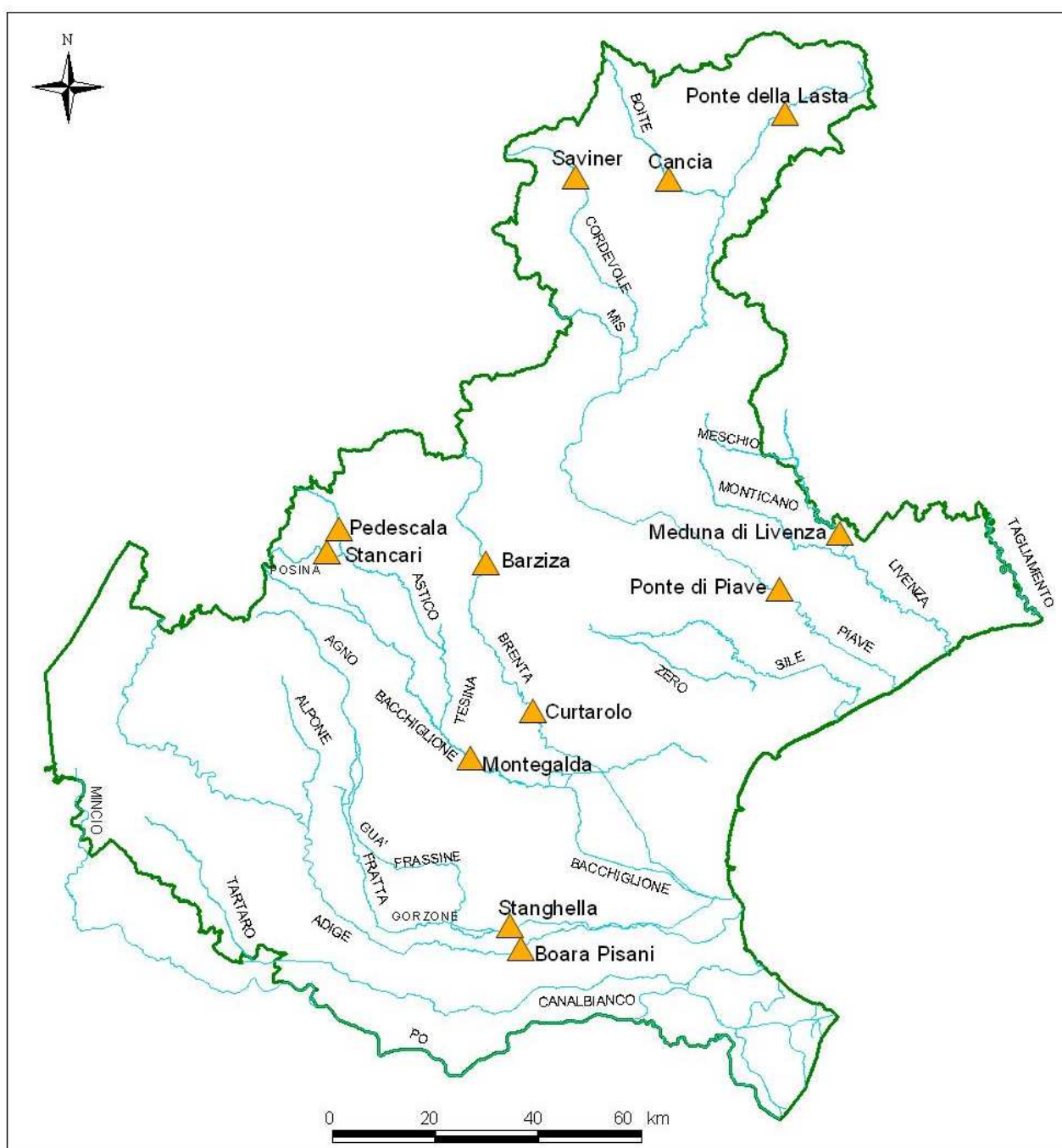


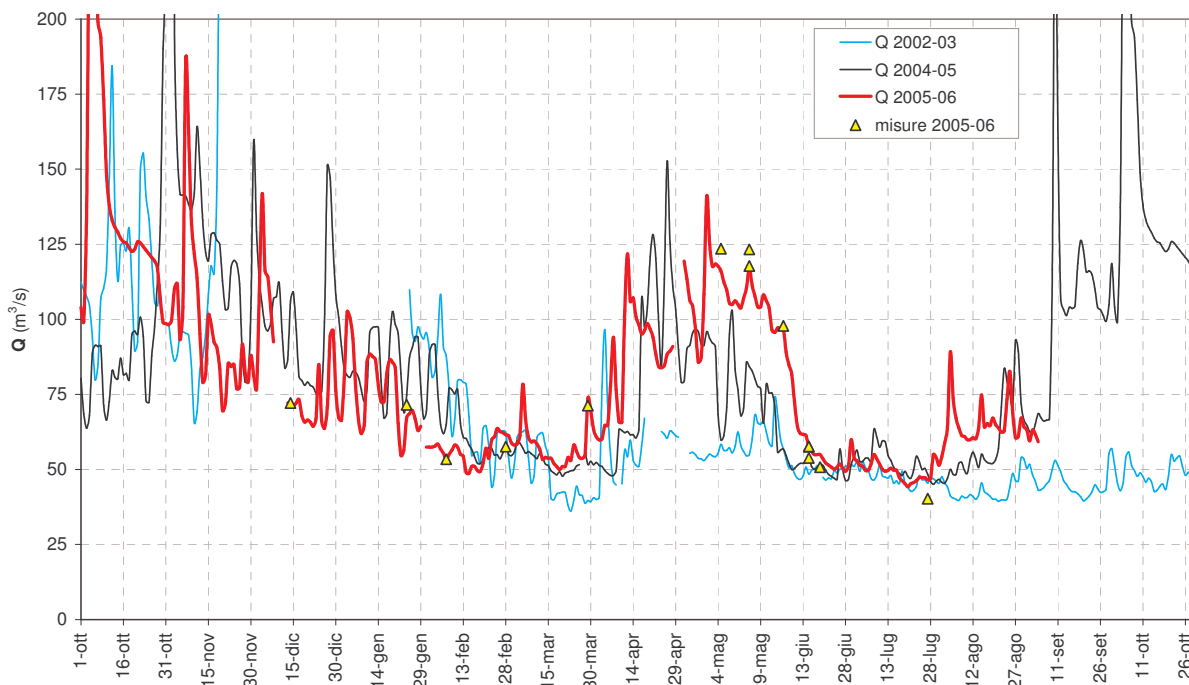
CONSIDERAZIONI SULLA SICCITA' IN TERRITORIO VENETO NEL TRIMESTRE MAGGIO-LUGLIO 2006

ALLEGATO D

Portate registrate su alcuni corsi d'acqua del Veneto

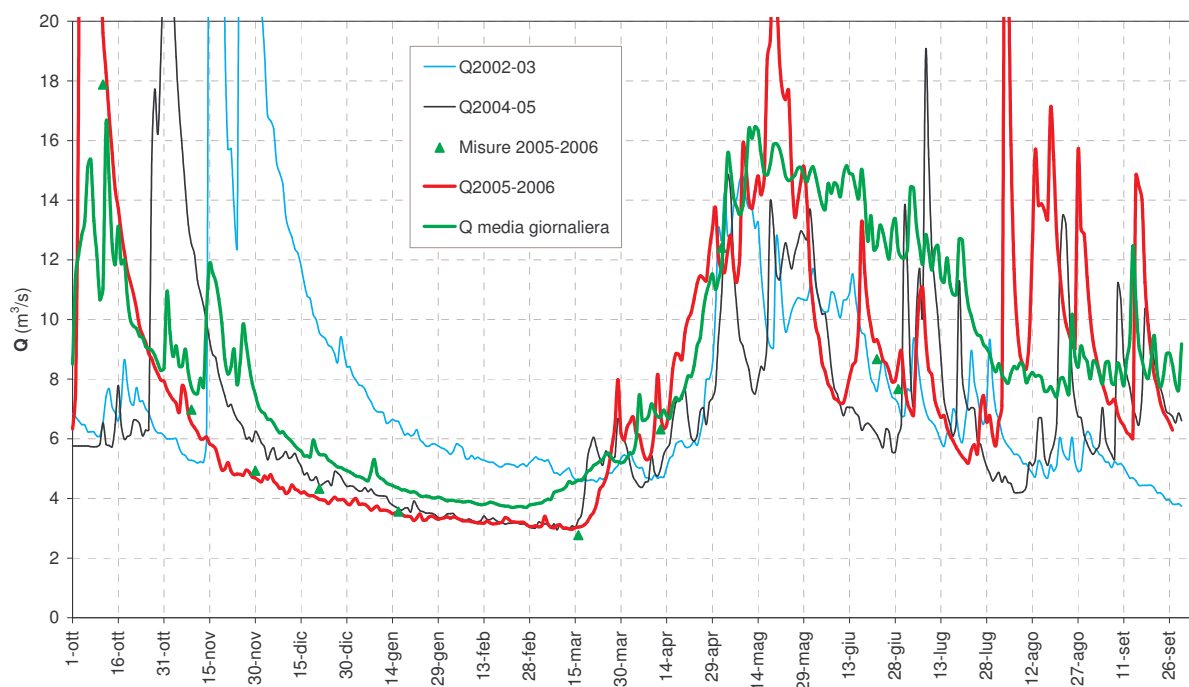


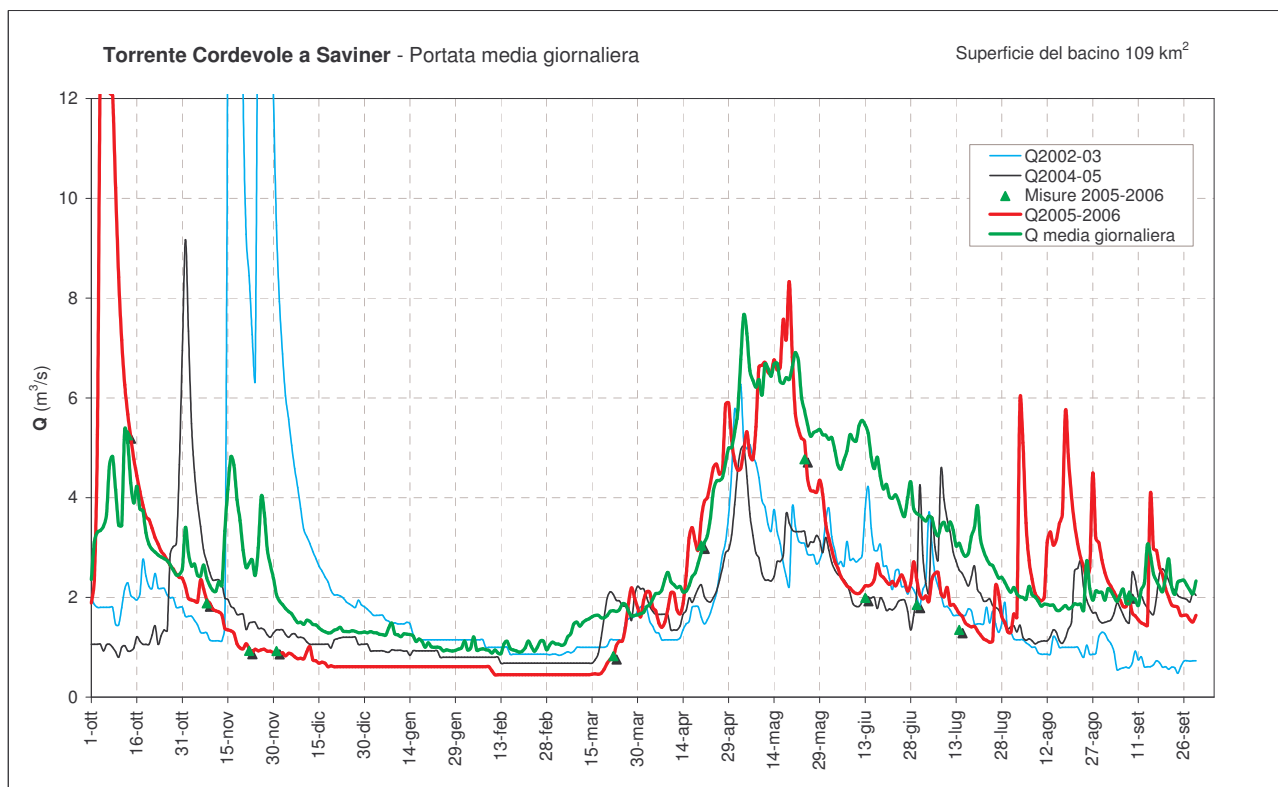
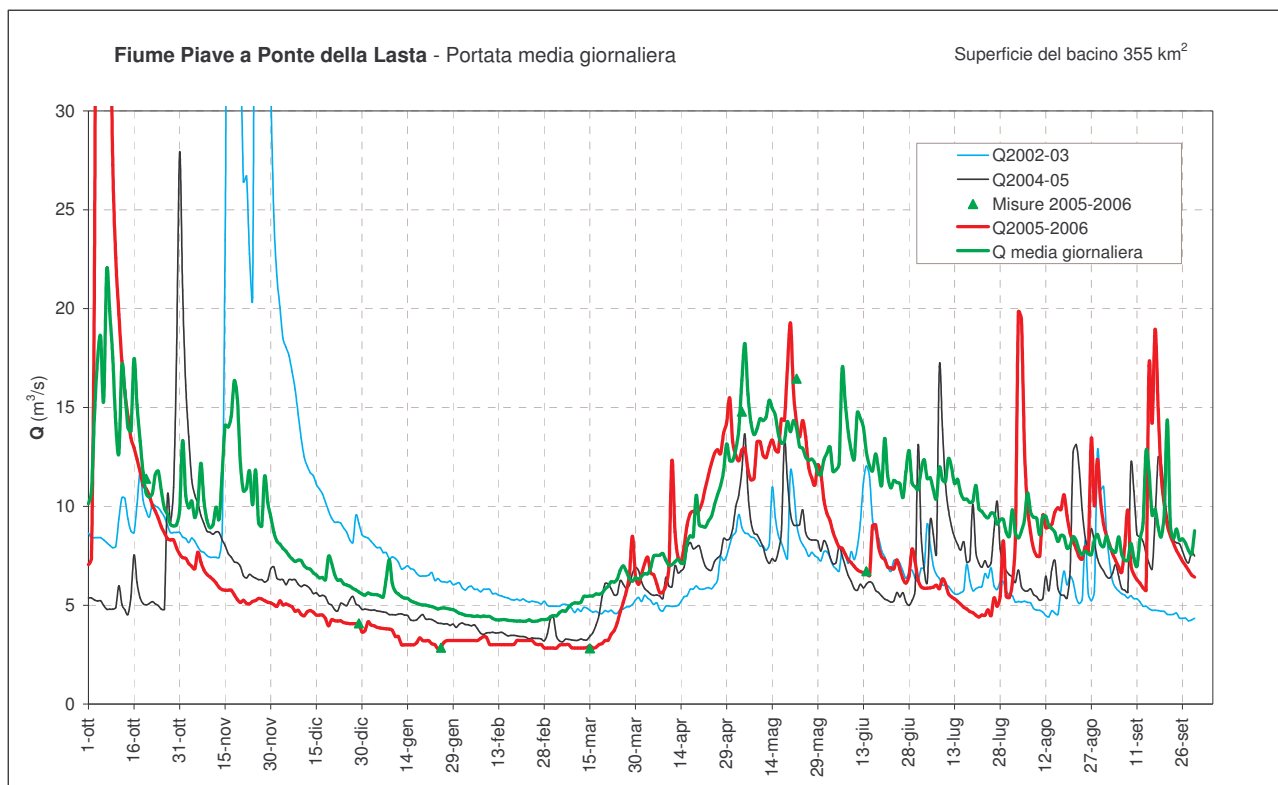
Fiume Livenza a Meduna di Livenza - Portata media giornaliera

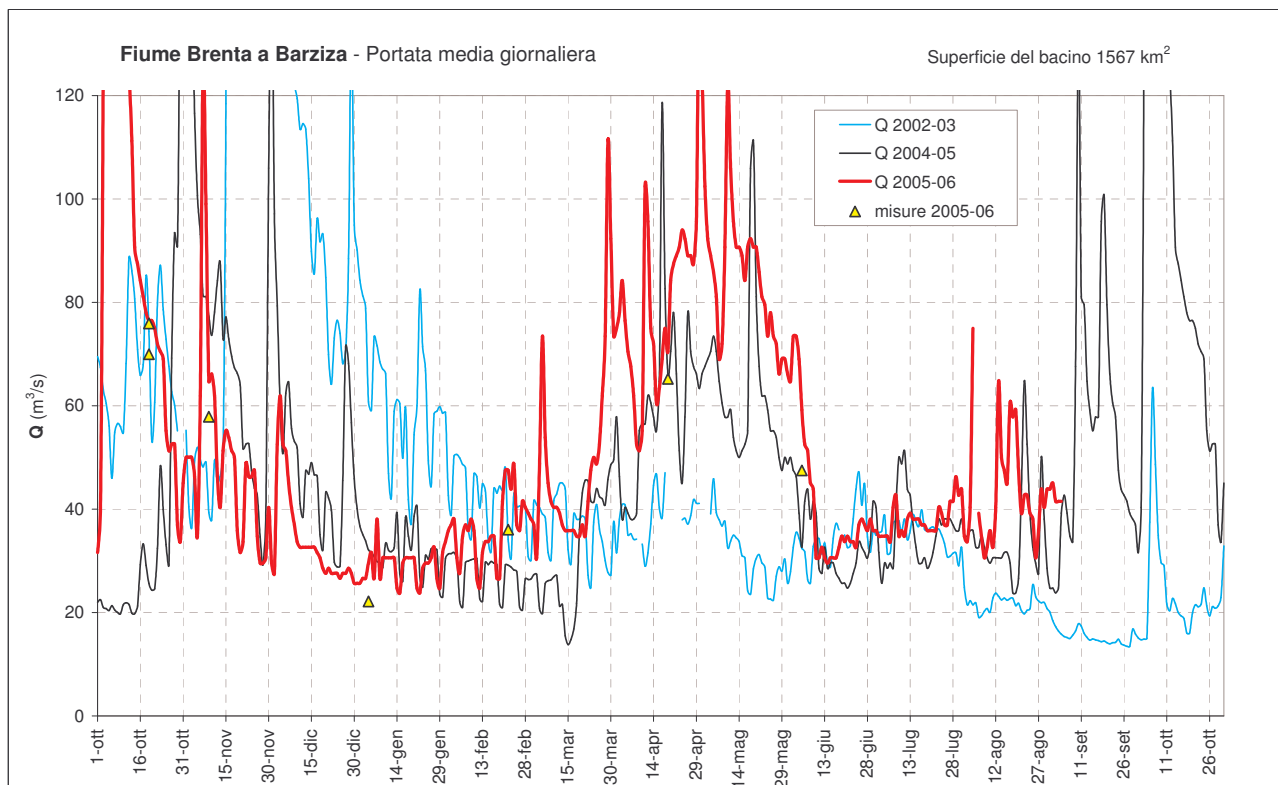
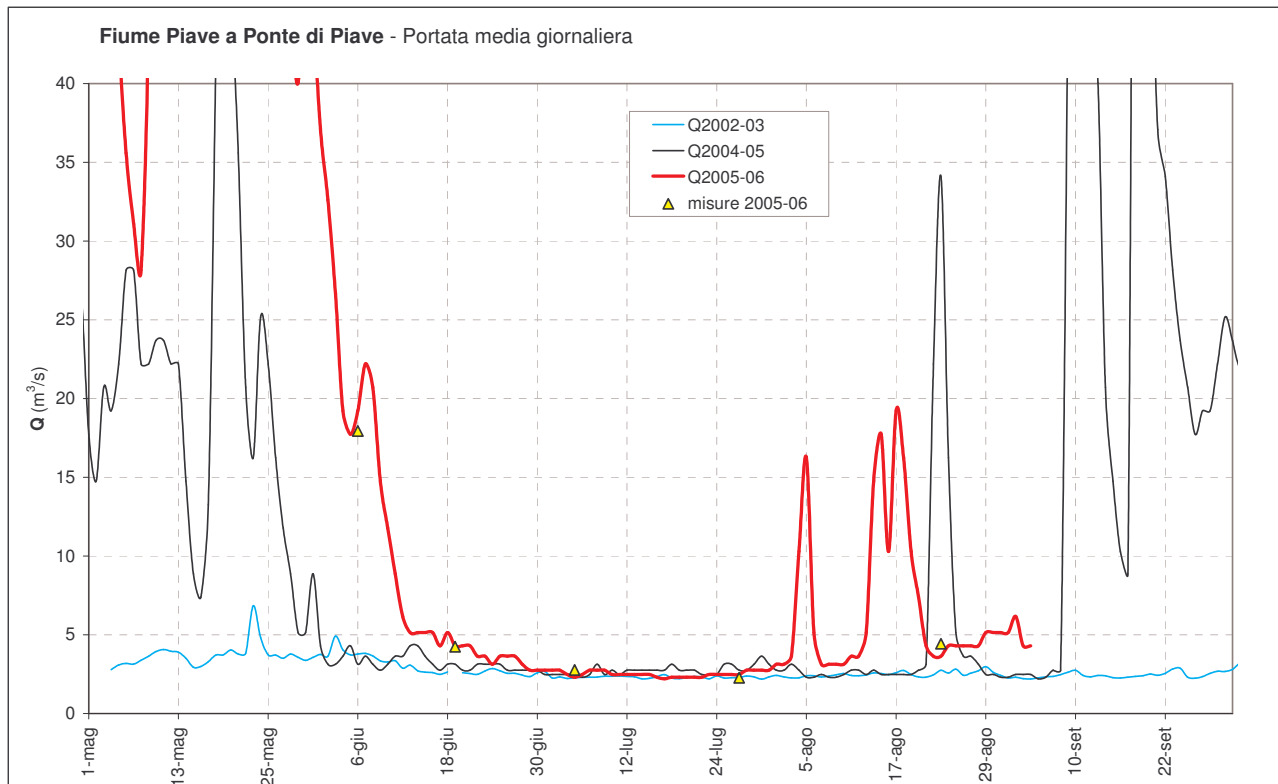


Torrente Boite a Cancia - Portata media giornaliera

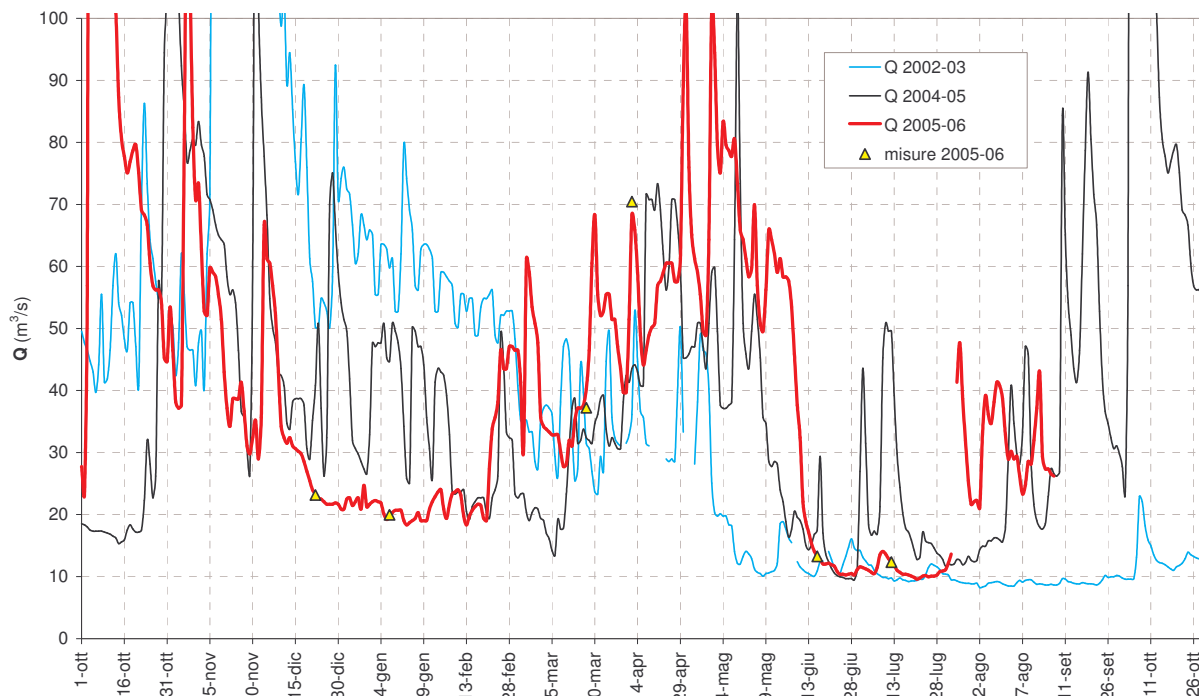
Superficie del bacino 288 km²





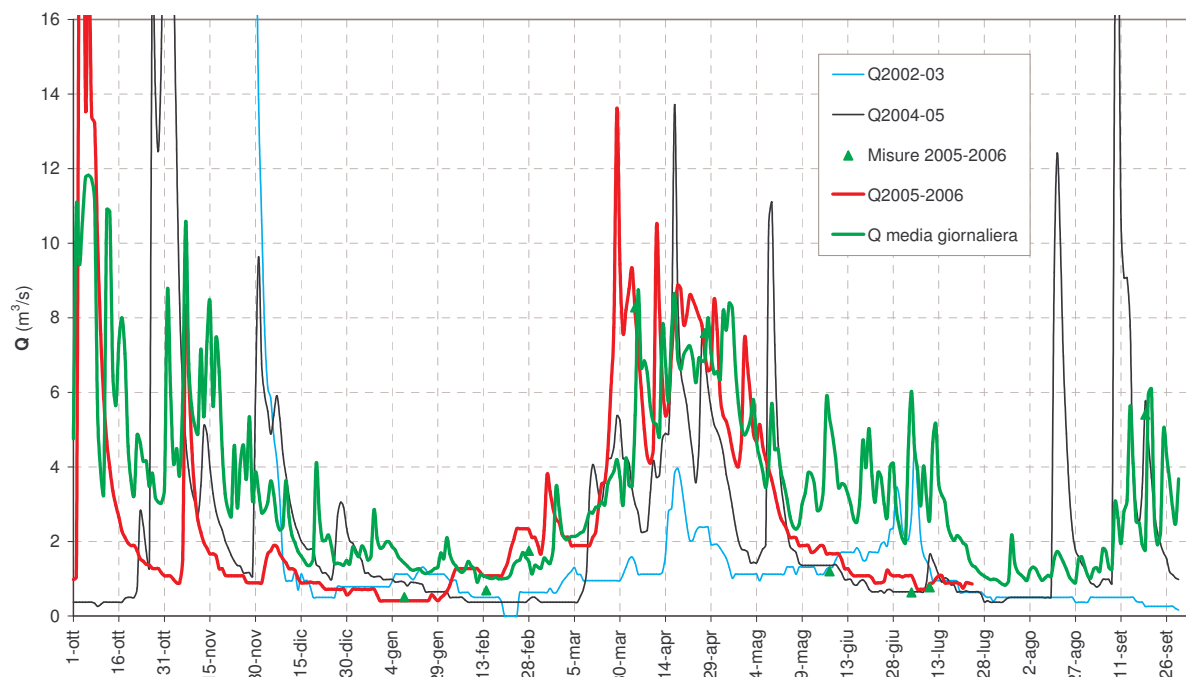


Fiume Brenta a Curtarolo - Portata media giornaliera

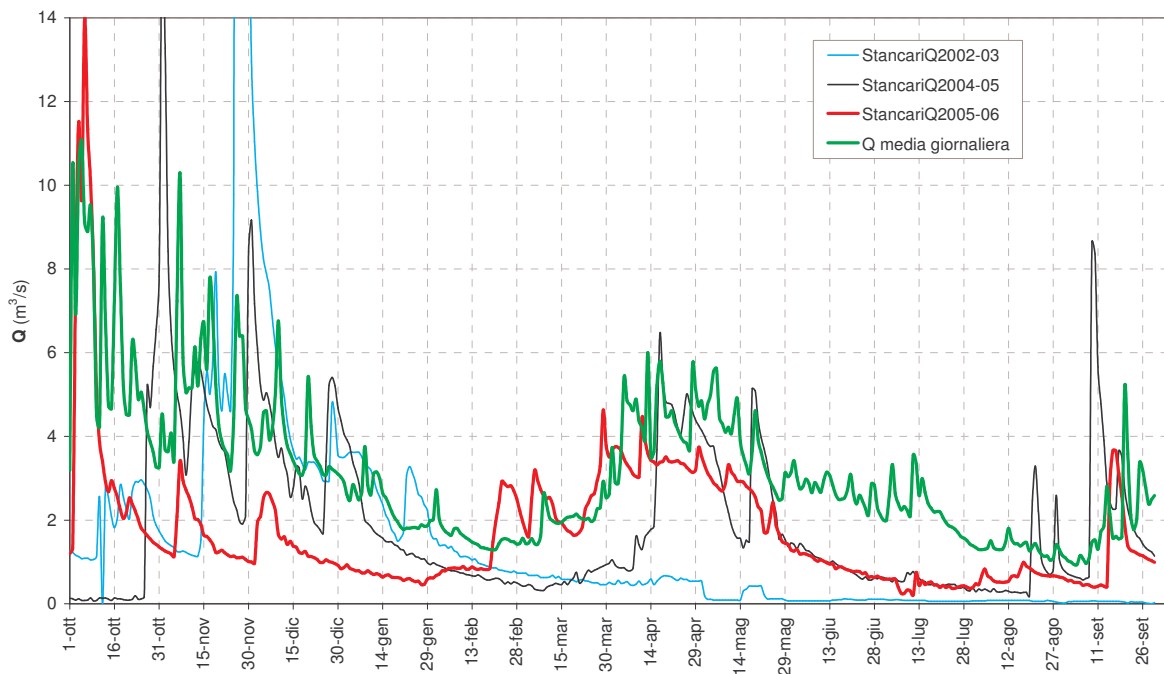


Torrente Astico a Pedescala - Portata media giornaliera

Superficie del bacino 136 km²



Torrente Posina a Stancari - Portata media giornaliera



Fiume Bacchiglione a Montegalda - Portata media giornaliera

